



Ashmole Street
London
SW8 1NT
0207 735 2419

www.ashmoleprimaryschool.org.uk

Ashmole Newsletter

AUTUMN 2017 - ISSUE 1

FRIDAY 15TH SEPTEMBER 2017

Attendance

04/09/17 to 14/09/17

R - 94.9%

Y1 - 98.8%

Y2 - 91.5%

Y3 - 97.6%

Y4 - 93.5%

Y5 - 100%

Y6 - 94.4%

Whole School

04/09/17 to 14/09/17

95.8%

TARGET = 96.5%

Stars of the Week

Class teachers and teaching assistants nominate two pupils each week who have stood out for making positive contributions to the life of our school. Pupils are recognised in our assemblies on Friday and are presented with certificates.

08/09/17

- N - Binh An & Leo
- R - Hugh & Marley
- Y1 - Alessandro & Destinee
- Y2 - Michael & Jamila
- Y3 - Zion & Athena
- Y4 - Richard & Bea
- Y5 - Montana & Yusuf
- Y6 - Yaqoob & Megan

15/09/17

- N - Emilia & Isla
- R - Marcus & Amelie
- Y1 - Zara & Elliot
- Y2 - Ria & Eshan
- Y3 - Owolabi & Gabbi
- Y4 - Daniel. J & Marli
- Y5 - Amiira & Moosa
- Y6 - Fantasy & Umor

Welcome Back

Ashmole staff enjoyed welcoming pupils back to school last week. A special welcome to parents and carers of pupils new to the school, whether joining our nursery and reception classes or having transferred from other schools. We have enjoyed getting to know your children over the past two weeks and seeing so many of you at the start and end of the school day. As expected, behaviour for learning is exemplary and pupils have been enjoying their new lessons. Staff have asked for their thanks to be passed on to families for the kind words and gifts that they received at the end of last year. We are looking forward to another year working in partnership with you to ensure that your children have a successful time at school.



This mosaic was created by our departing Year 6 pupils last year and is now displayed in the playground next to the Hanover Gardens gate. Pupils will be learning more about Elias Ashmole, the school's namesake, later in the autumn term.

MacMillan Coffee Morning

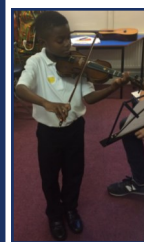
The Ashmole PSA (Parents and Staff Association) will be holding a coffee morning on Friday 29th September



between 9:00am and 9:30am in the school hall. In addition to raising money for MacMillan, this is a great opportunity to meet other parents and carers and find out how you can support other PSA events throughout the year. Parents and carers are invited to donate cakes for the event which can be brought in to school on the day. You will be able to make a contribution for drinks and refreshments and all money raised will go to the MacMillan cancer charity. We look forward to seeing as many of you as possible on Friday 29th.

Music Lessons

Music lessons with our partners, London Music Masters, recommenced this week and it has been wonderful to hear the sound of violins and cellos before, during and after school. Learning to play an instrument remains one of our main



areas of focus as a good grounding in music education has many far-reaching benefits. Parents and carers are encouraged to attend lessons wherever possible in order to support with practice at home.

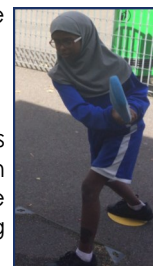
Extra Curricular Clubs

Extra-curricular clubs (including LMM Orchestra) begin next week and a letter will have been sent home informing you of the clubs that your child has a place at for this term. During the summer, we met with some new providers to further enhance the extracurricular clubs timetable and hope to be able to offer even more new activities in the future. There are a few vacancies for some activities including KS2 drama, tennis and gymnastics. Please ensure that club fees for the term ahead are paid by Monday 18th September.



Lunch Time Clubs

Our partnership with the Surrey Oval continues this year and in addition to Y5's weekly visit to the Ben Hollioake Learning Centre, the Surrey CCC staff are running a cricket club and a coding club during lunch time for pupils in Y3 & Y4.



Term dates 2016-17

Summer term 2:

Start
Monday 5 June

Finish
Friday 21 July**

* End of half term = usual finish time of **3.30pm** with EDC for those registered

** **End of full term = finish time of 2.00pm with NO EDC**

School CLOSED: Monday 1 May (Bank Holiday)

Term dates 2017-18

Autumn term 1:

Half term break:

Autumn term 2:

Christmas break:

Spring term 1:

Half term break:

Spring term 2:

Easter break:

Summer term 1:

Half term break:

Summer term 2:

Start

Tuesday 5 September
Monday 23 October
Monday 30 October
Thursday 21 December
Tuesday 2 January
Monday 12 February
Monday 19 February
Friday 30 March
Monday 16 April
Monday 28 May
Monday 4 June

Finish

Friday 20 October*
Friday 27 October
Wednesday 20 December**
Monday 1 January
Friday 9 February*
Friday 16 February
Thursday 29 March**
Friday 13 April
Friday 25 May*
Friday 1 June
Wednesday 18 July**

School CLOSED: Monday 4 September, Friday 13 October & Friday 9 March (staff INSET); Monday 7 May (Public holiday)

2 Week Planner

(items in blue open to parents/carers)

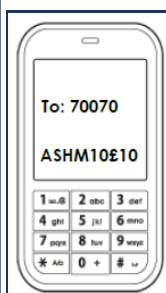
Mon 18/09	Tue 19/09	Wed 20/09	Thu 21/09	Fri 22/09
Year 3—6 Pottery 3.30—4.30pm	Rec—Reading Workshop 3.45pm—4.15pm Years 5 & 6 Orchestra 3.30pm—4.30pm Years 1, 2 & 3 Drama 3.30—4.30pm	Years 1 & 2 Gymnastics 8.00—8.45am	KS1—LMM Aurora Orchestra sit-in @ Morley college Years 3 & 4 Orchestra 8.00—8.30am Years 1 & 2 Mandarin 3.30-4.30pm Years 3—6 Tennis 3.40- 4.30pm	Years 3—6 Gymnastics 8.00—8.30am Years 3—6 Football 3.30—4.30pm Years 4, 5 & 6 Drama 3.30—4.30pm
Mon 25/09	Tue 26/09	Wed 27/09	Thu 28/09	Fri 29/09
Year 3—6 Pottery 3.30—4.30pm	EYFS interactive Learning Diary Workshop 3.45 – 4.45pm Years 5 & 6 Orchestra 3.30pm—4.30pm Years 1, 2 & 3 Drama 3.30—4.30pm	Years 1 & 2 Gymnastics 8.00—8.45am Year 5 & 6 Girls Football Tournament Kennington Park 9.00 am—12pm	Years 3 & 4 Orchestra 8.00—8.30am Years 1 & 2 Mandarin 3.30-4.30pm Years 3—6 Tennis 3.40- 4.30pm	Years 3—6 Gymnastics 8.00—8.30am Years 3—6 Football Years 4, 5 & 6 Drama 3.30—4.30pm MacMillan Coffee Morning 9 .00—9.30am

Please Sponsor our Ashmole Triathletes

Please support eight Ashmole children – Rufus, Andre and Sophie (Y6), Bea (Y5) and Ben, Jake, Tom and Daniel (Y4) who will be taking part in the Hever Castle Triathlon over the weekend of

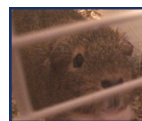
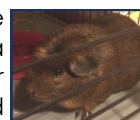


23/24 September. The younger children will be swimming 100m (in the castle lake), cycling 4km and running 1.3km, whilst our year 6 children will be doing 200m, 4km and 1.8km! Stephen (Sophie and Daniel's Dad) and Josh (Bea, Ben and Jake's Dad) are also taking part and all will be fundraising for Ashmole PSA as their chosen charity. You can sponsor our young triathletes and raise money for our school (in particular to help fund school trips) by texting 70070 with the code ASHM10 and the amount you wish to donate (e.g. ASHM10£10). Good luck to all of our pupils (and family) taking part!



Guinea Pigs

There is some sad news from the summer to report to you. Our guinea pigs, Ben and Ten, spent the summer at a small pets boarding house and within 2 weeks of each other they both sadly passed away. Ben and Ten joined the school when our current Year 6 pupils were in reception class. We hope that they had a good life at Ashmole and know that they will be missed by our staff and pupils. Teachers spoke to pupils in class today about this news.



Cakes and Sweet Treats

Last year, the school was accredited with the Healthy School Bronze Award. We would like to continue working with parents and carers to help our pupils become even healthier in all aspects of their lives. In order to meet guidelines provided by the Lambeth Health Education Link Service we are asking parents **not** to send in cakes and sweets to be given out to other children e.g. as part of birthday celebrations. We will continue to acknowledge pupil birthdays in our assemblies and expect there are lots of other opportunities to enjoy birthday cakes with family and friends!



Absence Reporting

If your child is unable to attend school, please call the school office (0207 735 2419) on the first day of absence. It is important that the school is aware of reasons for absence so that we can complete our registers with the correct codes.

School Uniform



Thank you to the vast majority of parents and carers who have ensured that their children are correctly attired for school. Clothes with a name label are much easier to return to their rightful owner! Please note that school shoes must be entirely black (no coloured logos or markings).